

Tactical Solutions. Strategic Impact.

## KER-322 Advanced Cyber Environment With Social Media Enhancement

### DOD CEMA Training Tool

Robust, low-cost, portable, 2RU, easily configurable, remotely accessible (IP-based) cyber, email and social media OPFOR simulator.

- ❑ Use in STANDALONE, Wired, or Wireless configuration
- ❑ Simulates Twitter®, Facebook®, and other social media profiles, groups, posts and comments
- ❑ Simulates distributed, remote wireless environments
- ❑ Easy to use E-Mail and social media traffic generation and scenario building tools
- ❑ Easily scripted, dynamic injects from PC and Smartphone
- ❑ Supports local and remote users
- ❑ Comes with OPFOR "Targetable" Raspberry Pi platforms

For more information:  
info@KerberosInc.com  
254.771.1080

**Advanced Cyber Training Tool with Internet, E-Mail and Social Media Simulators.**



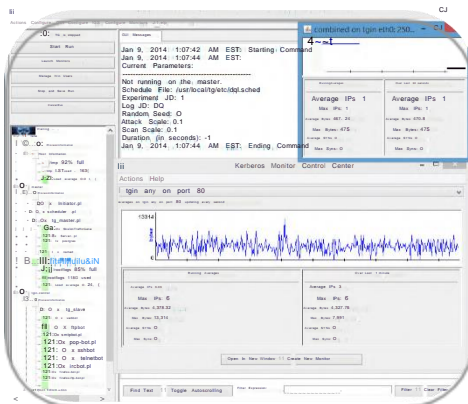
- ❑ Real Traffic
- ❑ Real Targets
- ❑ Real Training
- ❑ Websites and E-Mail
- ❑ Social Media

The KER-322 Advanced Cyber Environment (ACE) with the Social Media Enhancement (SME) module is a robust, low-cost, portable, easily configurable, fully functional, **Opposing Force Cyber Training Tool**.

KER-322 ACE's primary purpose is to provide the look and feel of a realistic Internet environment by generating various bandwidths of *real* traffic including 18 various email and simulated social media platforms (in 82 languages) to include Twitter®, Facebook® and Instagram® "like" profiles, groups, posts, comments and feeds.

KER-322 ACE supports virtually all DOD tactical CEMA training requirements, including custom traffic generation tools to "build the haystack" for cyber training and test scenarios. KER322 also supports easily scripted, dynamic injects from PC and smartphone (iPhone) users and enables both local and remote users to train with the system.

The system generates a mixture of protocols including simulated Twitter®, Facebook®, Instagram®, HTTP(S), SMTP, P2P and others from tens of thousands of IPs. One can easily create thousands of notional internet websites or "collect" actual internet sites in order to replicate a specific live environment.



- ❑ Easily create thousands of simulated users, profiles, social media groups, social media feeds/posts/comments and emails
- ❑ Live, dynamic injects from PC and smartphone users
- ❑ Automated tools enable quick traffic generation
- ❑ WebBot feature simulates human use of the Internet